

819144PM
01-05-2004

529°
MATERIAL SAFETY DATA SHEET

Page 1 of 5

0401970

REVISION DATE: 09-12-2003

SUPERSEDES: None

SECTION 1: CHEMICAL PRODUCT AND COMPANY IDENTIFICATION

COMPANY INFORMATION

Specialty Construction Brands, Inc.
(formerly TEC Specialty Products, Inc.)
An H.B. Fuller Company)
315 South Hicks Road
Palatine, IL 60067
Phone: 847-358-9500

Medical Emergency Phone Number (24 Hours): 1-888-853-1758

Transport Emergency Phone Number (CHEMTREC): 1-800-424-9380

PRODUCT INFORMATION

PRODUCT IDENTIFIER: 819144PM
PRODUCT NUMBER: DOUBLE DUTY PLUS
PRODUCT DESCRIPTION: White type I mastic

FIXED

SECTION 2: COMPOSITION/INFORMATION ON INGREDIENTS

Unlisted ingredients are not 'hazardous' per the Occupational Safety and Health Administration Hazard Communication Standard (29 CFR 1910.1200) and/or are not found on the Canadian Workplace Hazardous Materials Information System ingredient disclosure list. See Section 8 for any additional exposure limit guidelines.

Chemical Name	CAS #	PERCENT	OSHA PEL
Calcium carbonate	471-34-1	50 - 70	TWA (Respirable dust) 5 MG/M3 TWA (Total dust) 15 MG/M3
Stoddard solvent	8052-41-3	1 - 5	TWA 100 ppm
Magnesium carbonate	546-93-0	1 - 5	TWA (Respirable dust) 5 MG/M3 TWA (Total dust) 15 MG/M3
Crystalline silica	14808-60-7	0.1 - 1	TWA (Respirable dust) 0.1 MG/M3

SECTION 3: HAZARDS IDENTIFICATION

EMERGENCY OVERVIEW

Cancer hazard.

HMIS RATING: HEALTH -- 0 FLAMMABILITY -- 0 REACTIVITY -- 0

MATERIAL SAFETY DATA SHEET

See SECTION 8: EXPOSURE CONTROLS/PERSONAL PROTECTION for personal protective equipment recommendations.

POTENTIAL HEALTH EFFECTS BY ROUTE OF ENTRY

EYE: Can cause minor irritation, tearing and reddening.

SKIN: Can cause minor skin irritation, defatting, and dermatitis.

INHALATION: Can cause minor respiratory irritation. Inhalation of dusts produced during cutting, grinding or sanding of this product may cause irritation of the respiratory tract.

Inhalation of high concentrations may result in central nervous system (CNS) effects such as dizziness, weakness, fatigue, nausea, headache, and lack of coordination. Overexposure to crystalline silica may cause silicosis.

INGESTION: Ingestion is not an anticipated route of exposure. No hazard in normal industrial use.

LONG-TERM (CHRONIC) HEALTH EFFECTS

TARGET ORGAN(S): Kidneys Central nervous system Lungs

REGULATED CARCINOGEN STATUS:

Unless noted below, this product does not contain regulated levels of NTP, IARC, ACGIH, or OSHA listed carcinogens.

Crystalline silica

EXISTING HEALTH CONDITIONS AFFECTED BY EXPOSURE: Kidney disease; Lung disease

SECTION 4: FIRST AID MEASURES

IF IN EYES: Flush eyes with plenty of water for at least 20 minutes retracting eyelids often. Tilt the head to prevent chemical from transferring to the uncontaminated eye. Get immediate medical attention.

IF ON SKIN: Wash with soap and water. Get medical attention if irritation develops or persists.

IF VAPORS INHALED: Remove to fresh air. Call a physician if symptoms persist.

IF SWALLOWED: Do not induce vomiting. Seek medical attention if symptoms develop. Provide medical care provider with this MSDS.

SECTION 5: FIRE FIGHTING MEASURES

FLASH POINT:	Non flammable
AUTOIGNITION TEMPERATURE:	Not established
LOWER EXPLOSIVE LIMIT (% in air):	Not established
UPPER EXPLOSIVE LIMIT (% in air):	Not established
EXTINGUISHING MEDIA:	Use water spray, foam, dry chemical or carbon dioxide.
UNUSUAL FIRE AND EXPLOSION HAZARDS:	There is a possibility of pressure buildup in closed containers when heated. Water spray may be used to cool the containers.
SPECIAL FIRE FIGHTING INSTRUCTIONS:	Persons exposed to products of combustion should wear self-contained breathing apparatus and full protective equipment.
HAZARDOUS COMBUSTION PRODUCTS:	Carbon dioxide, Carbon monoxide

SECTION 6: ACCIDENTAL RELEASE MEASURES

SPECIAL PROTECTION: No adverse health effects expected from the clean-up of spilled material. Follow personal protective equipment recommendations found in Section 8 of this MSDS.

CLEAN-UP: Dike if necessary, contain spill with inert absorbent and transfer to containers for disposal. Keep spilled product out of sewers, watersheds, or water

MATERIAL SAFETY DATA SHEET

systems.

Transport Emergency Phone Number (CHEMTREC): 1-800-424-9300

SECTION 7: HANDLING AND STORAGE

Handling: No special handling instructions due to toxicity.

Storage: Store in a cool, dry place.

Consult the Technical Data Sheet for specific storage instructions.

SECTION 8: EXPOSURE CONTROLS/PERSONAL PROTECTION

EYE PROTECTION: Wear safety glasses with side shields when handling this product. Wear additional eye protection such as chemical splash goggles and/or face shield when the possibility exists for eye contact with splashing or spraying liquid, or airborne material. Have an eye wash station available.

SKIN PROTECTION: Avoid skin contact by wearing chemically resistant gloves.

GLOVES: Not normally required. Use nitrile gloves if conditions warrant.

RESPIRATORY PROTECTION: Respiratory protection may be required to avoid overexposure when handling this product. Use a respirator if general room ventilation is not available or sufficient to eliminate symptoms. Respirators should be selected by and used following requirements found in OSHA's respirator standard (29 CFR 1910.134).

VENTILATION: Use local exhaust ventilation or other engineering controls to minimize exposures.

EXPOSURE LIMITS:

Chemical Name	ACGIH EXPOSURE LIMITS	AIHA WEL
Calcium carbonate	TWA 10 MG/M3	Not established
Stoddard solvent	TWA 100 ppm	Not established
Magnesium carbonate	TWA (Total dust) 10 MG/M3	Not established
Crystalline silica	TWA (Respirable dust) 0.05 MG/M3	Not established

SECTION 9: PHYSICAL AND CHEMICAL PROPERTIES

PHYSICAL STATE: Semi-solid
COLOR: White
ODOR: Slight Indistinct
ODOR THRESHOLD: Not established

MATERIAL SAFETY DATA SHEET

WEIGHT PER GALLON (lbs.): 12.5
SPECIFIC GRAVITY: 1.5
SOLIDS (% by weight): 71.0

pH: 8.4
BOILING POINT (deg. C): Not established
FREEZING/MELTING POINT (deg. C): Not established
VAPOR PRESSURE (mm Hg): Not established
VAPOR DENSITY: Not established
EVAPORATION RATE: Not established
OCTANOL/WATER COEFFICIENT: Not established

SECTION 10: STABILITY AND REACTIVITY

STABILITY: Stable under normal conditions.
CHEMICAL INCOMPATIBILITY: Strong oxidizing agents
HAZARDOUS POLYMERIZATION: Will not occur.
HAZARDOUS DECOMPOSITION PRODUCTS: Carbon monoxide, carbon dioxide

SECTION 11: TOXICOLOGICAL INFORMATION

CHEMICAL NAME	LD50/LC50
Calcium carbonate	Oral LD50 Rat = 6450 mg/kg
Stoddard solvent	Not established
Magnesium carbonate	Not established
Crystalline silica	Not established

TOXICOLOGY SUMMARY: No additional health information available.

SECTION 12: ECOLOGICAL INFORMATION

OVERVIEW: No ecological information available

SECTION 13: DISPOSAL CONSIDERATIONS

To the best of our knowledge, this product does not meet the definition of hazardous waste under the U.S. EPA Hazardous Waste Regulations 40 CFR 261. Solidify and dispose of in an approved landfill. Consult state, local or provincial authorities for more restrictive requirements.

SECTION 14: TRANSPORTATION INFORMATION

Consult Bill of Lading for transportation information.
DOT: NOT REGULATED
IATA: NOT REGULATED

SECTION 15: REGULATORY INFORMATION

INVENTORY STATUS

MATERIAL SAFETY DATA SHEET

U.S. EPA TSCA: This product is in compliance with the Toxic Substances Control Act's
Inventory requirements.

If you need more information about the inventory status of this product call 651-236-5858.

FEDERAL REPORTING

EPA SARA Title III Section 313

Unless listed below, this product does not contain toxic chemical(s) subject to the reporting requirements of section 313 of Title III of the Superfund Amendments and Reauthorization Act of 1986 (SARA) and 40 CFR part 72. EPA has advised that when a percentage range is listed the midpoint may be used to fulfill reporting obligations.

Chemical Name	CAS#	%
---------------	------	---

WHMIS STATUS: Unless listed below, this product is not controlled under the Canadian Workplace Hazardous Materials Information System.

D2B D2A

STATE REPORTING

Proposition 65, The Safe Drinking Water and Toxic Enforcement Act of 1986:

Unless listed below, this product does not contain known levels of any chemical known to the State of California to cause cancer or reproductive harm.

Chemical Name/List	CAS	Percent
Quartz	14808-60-7	0.1 - 1
Acrylamide (Carcinogen)	79-06-1	< 10 ppm
Lead (Carcinogen)	7439-92-1	< 10 ppm
Arsenic compounds (inorganic) (Carcinogen)	7440-38-2	< 10 ppm
Lead (Developmental toxin)	7439-92-1	< 10 ppm
Lead (Female reproductive toxin)	7439-92-1	< 10 ppm
Lead (Male reproductive toxin)	7439-92-1	< 10 ppm

SECTION 16: ADDITIONAL INFORMATION

This Material Safety Data Sheet is prepared to comply with the United States Occupational Safety and Health Administration (OSHA) Hazard Communication Standard (29 CFR 1910.1200) and the Canadian Workplace Hazardous Materials Information System (WHMIS).

Prepared by: The Global Regulatory Department
Phone: 651-236-5842

The information and recommendations set forth herein are believed to be accurate. Because some of the information is derived from information provided to Specialty Construction Brands, Inc. from its suppliers, and because Specialty Construction Brands, Inc. has no control over the conditions of handling and use, Specialty Construction Brands, Inc. makes no warranty, expressed or implied, regarding the accuracy of the data or the results to be obtained from the use thereof. The information is supplied solely for your information and consideration, and Specialty Construction Brands, Inc. assumes no responsibility for use or reliance thereon. It is the responsibility of the user of Specialty Construction Brands, Inc. products to comply with all applicable federal, state and local laws and regulations.



CORPORATE INFORMATION CONTACT INFORMATION [FAQS](#) [RETAILER](#)

PRODUCT SEARCH

PRODUCT SEARCH RESULTS

search >

PRODUCTS

NEW SOLUTIONS

TOP SOLUTIONS

PRODUCT SELECTOR

LITERATURE

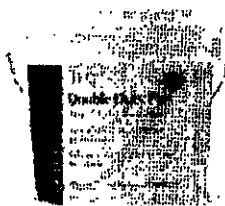
WARRANTY INFORMATION

MERCHANDISING

DATA SHEETS

UPDATE YOUR PROFILE

RESOURCES



Double Duty™ Plus

Double Duty™ Plus is a premium ready-to-use white 100% acrylic interior adhesive. Excellent for setting marble and ceramic tile over interior walls and floors. Approved for floor applications with tile up to 8"x8" (200 x 200 mm) and wall applications with tile up to 16"x16" (400 x 400 mm). Bright white, non-staining formula is perfect for light-colored stone and grout.
Product# - DDP

SPECIFICATIONS

(MSDS) - [MSDS_DoubleDutyPlus](#)
(PDS) - [PDS_DoubleDutyPlus.pdf](#)

[Back To Products >](#)

NEED ASSISTANCE?

If you need assistance in choosing or using a product, please contact our technical service department.
800.832.9023

[Home](#) | [Contact Us](#) | [Site Index](#) | [Legal Terms](#)
Copyright ©2004 Specialty Construction Brands. All Rights Reserved
H.B. FULLER >